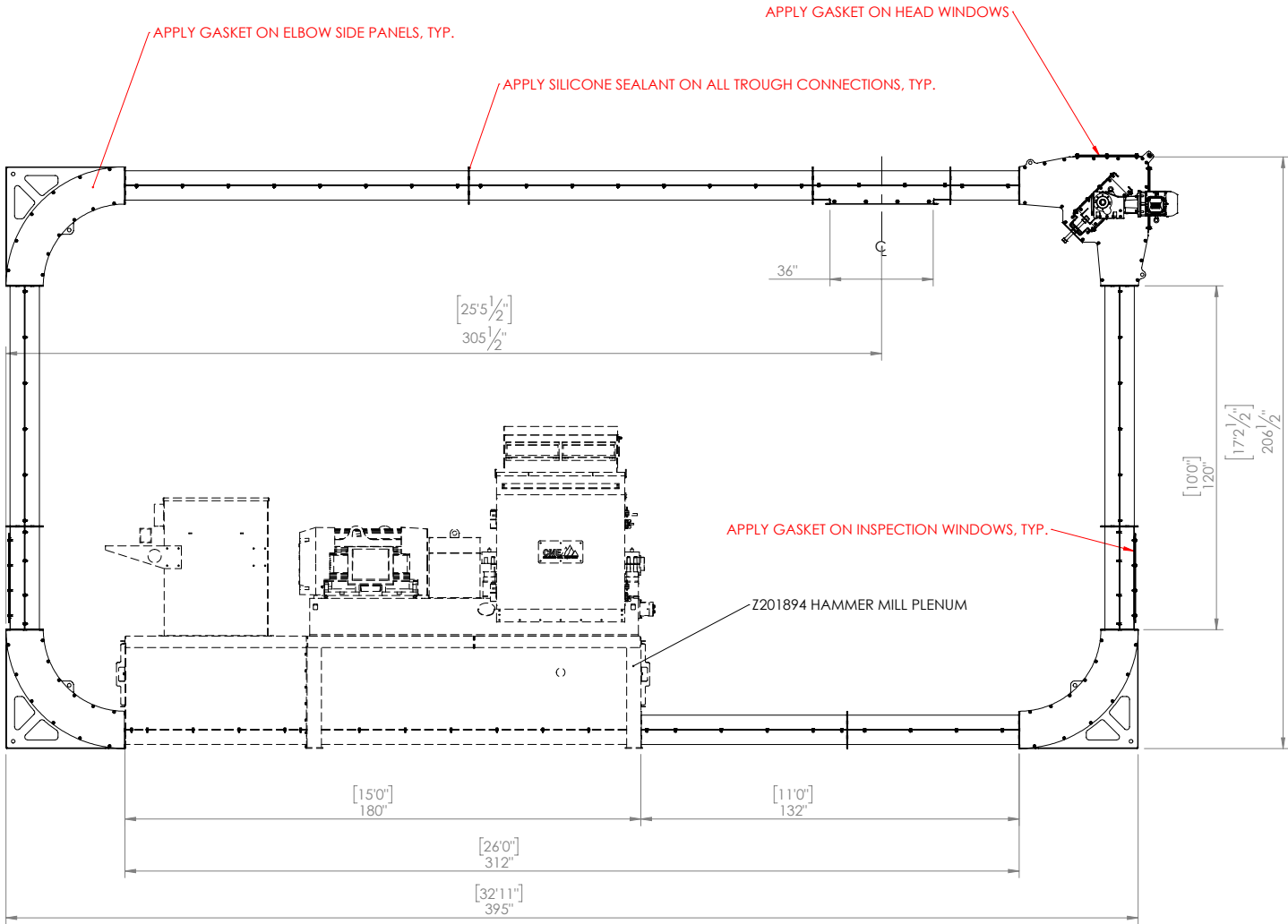
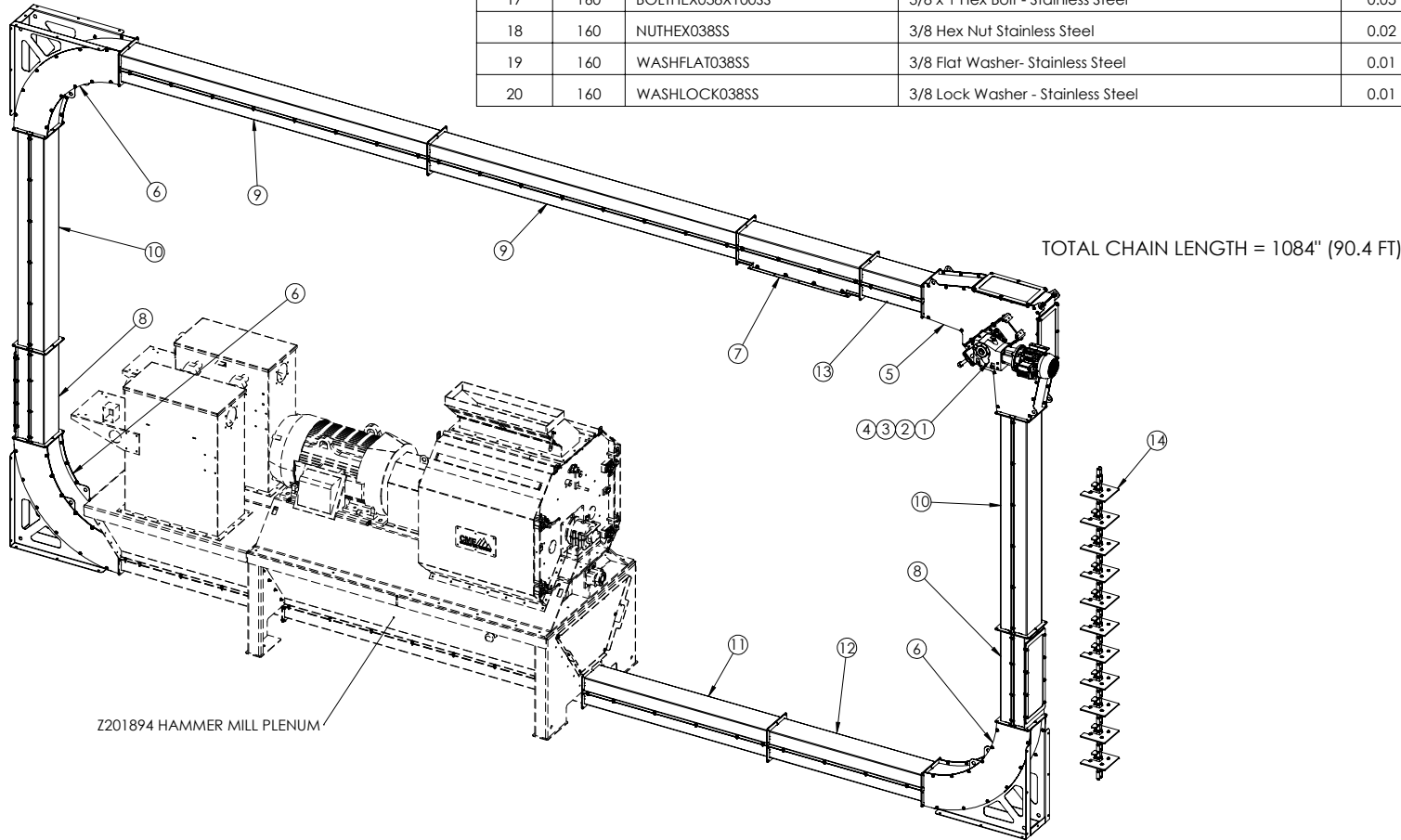


DIMENSIONS ARE IN INCHES. TOLERANCE ±0.063" UNLESS NOTED.



| MODEL SPECIFICATION | |
|---------------------|----------------------------|
| TAG | LP02 |
| QUANTITY | 1 |
| MODEL | CUSTOM-LC10 |
| APPLICATION | GROUND HEMP |
| DENSITY (LB/CF) | 4 - 5 LB/CF |
| FEED TYPE | METERED |
| DESIGN CAPACITY | 4400 CF/HR |
| | 8 MT/HR @ 4 LB/CF |
| | 10 MT/HR @ 5 LB/CF |
| SHAFT SPEED | 44 RPM |
| CHAIN SPEED | 135 FPM |
| LIVE LOAD | 150 LBS |
| PAINT | STAINLESS STEEL (NO PAINT) |

| BILL OF MATERIALS | | | | |
|-------------------|-------|----------------------------|-----------------------------------------------------------------------------------------------------------------------------------------------------------------------------------|-------|
| ITEM | QTY | PART NUMBER | DESCRIPTION | LBS |
| 1 | 1 | NOSK9022AZB180TC107-044RPM | DRIVE: NORD SK9022 AZB N180TC 107 39.77:1 RATIO LUBRICANT: MOBIL SHC GEAR 220 | 119.0 |
| 2 | 1 | M003-M-575-TC-TEFC | WEG W22 NEMA PREMIUM EFFICIENCY MOTOR TEFC - SEVERE DUTY - IP55 - 1.25 SF 3HP 1750RPM 575v 3ph 60hz 182TC CLASS II DIV 2 GROUP G INVERTER DUTY - 20:1 CONSTANT TORQUE | 94.8 |
| 3 | 4 | BOLTSH050X175 | 1/2 x 1 3/4 Socket Head Bolt - Gr 5 | 0.15 |
| 4 | 4 | WASHLOCK050 | 1/2 Lock Washer - Plated | 0.01 |
| 5 | 1 | LC10-HEAD-SNC-9022F-115R1 | 10" LOOP CONVEYOR HEAD, 3/16" 304SS | 447 |
| 6 | 3 | LC10-ELBOW-90D-35R-SS | 10" LOOP CONV. ELBOW, 3/16" 304SS | 214 |
| 7 | 1 | LC10-DISCH36-SS | 10" LOOP CONV. 36" DISCHARGE, 10GA 304SS | 101 |
| 8 | 2 | LC10-TR-03-INSP-SS | 10" LOOP CONV. 3FT TROUGH W/WINDOW, 10GA 304SS | 75 |
| 9 | 2 | LC10-TR-10-SS | 10" LOOP CONV. 10FT TROUGH, 10GA 304SS | 172 |
| 10 | 2 | LC10-TR-07-SS | 10" LOOP CONV. 7FT TROUGH, 10GA 304SS | 156 |
| 11 | 1 | LC10-TR-06-SS | 10" LOOP CONV. 6FT TROUGH, 10GA 304SS | 134 |
| 12 | 1 | LC10-TR-05-SS | 10" LOOP CONV. 5FT TROUGH, 10GA 304SS | 113 |
| 13 | 1 | LC10-TR-02-SS | 10" LOOP CONV. 2FT TROUGH, 10GA 304SS | 49 |
| 14 | 10 | DCCH-81XSS-975X975-4P | 81XSS DRAG CHAIN ASSY 10'LG, 10" LOOP CONVEYOR 3/8" X 9.75" WHITE UHMW PADDLE, 3/16" 304SS ATTACHMENT | 54 |
| 15 | 10 | SILICONE-SEALANT FOOD GR. | CAULKING TUBE, FOOD GRADE | 0.0 |
| 16 | 100ft | GASKET-063X150-NBR | WHITE NITRILE 1/16 THK X 1-1/2 WIDE | 0.0 |
| FIELD HARDWARE | | | | |
| 17 | 160 | BOLTHEX038X100SS | 3/8 x 1 Hex Bolt - Stainless Steel | 0.05 |
| 18 | 160 | NUTHEX038SS | 3/8 Hex Nut Stainless Steel | 0.02 |
| 19 | 160 | WASHFLAT038SS | 3/8 Flat Washer - Stainless Steel | 0.01 |
| 20 | 160 | WASHLOCK038SS | 3/8 Lock Washer - Stainless Steel | 0.01 |



| REVISIONS | | | |
|-----------|----------------------------------------------------|-------------|----|
| REV. | DESCRIPTION | DATE | BY |
| 1 | UPDATED DESIGN CAPACITY, ISSUED FOR FABRICATION | 15-Dec-2019 | CB |

THE INFORMATION CONTAINED IN THIS DRAWING IS INTENDED TO PROVIDE DIMENSIONAL REFERENCES AND LOADING INFORMATION ONLY. IT IS IN NO WAY TO BE INTERPRETED TO PROVIDE ENGINEERING SPECIFICATIONS OR DESIGN RELATED TO SUPPORTING STRUCTURES. ALL SUPPORTING STRUCTURES MUST BE DESIGNED AND INSPECTED BY A PROFESSIONAL ENGINEER LICENSED IN THE APPROPRIATE JURISDICTION. G.J. VIS ENTERPRISES INC. ASSUMES NO RESPONSIBILITY FOR THE STRUCTURAL SUPPORT OF PRODUCTS SUPPLIED BEYOND THE REQUIREMENTS INDICATED ON SUPPORTING DRAWINGS PROVIDED.

ISSUED
FOR FABRICATION

| | | | | |
|-----------------------------------------------|--|----------------------------------------|----------|----------------------|
| CLIENT AMERICAN MILL | | SITE LOCATION PORTAGE LA PRAIRE, MB | | SO# 000729 |
| TITLE 10IN LOOP CONVEYOR LP02 HM-PLENUM SS | | TITLE ASSEMBLY DETAILS | | WEIGHT (LBS) 5393 |
| DWG NO Z201902 | | SHEET 1 OF 1 | REV 1 | BY CB |
| | | DATE 10-JAN-2020 | | |

