

SPARE PARTS MANUAL

**RETORT**  
**MODEL SA\_14X**



**CONTENTS:**

1. MAJOR COMPONENTS: ..... 3

2. CONTROLS:..... 4

3. DOOR LOCK SAFETY DEVICE:..... 5

4. SECURITY PIN CYLINDER: ..... 6

5. SECURITY CYLINDER: ..... 7

6. DOOR:..... 8

7. DOOR LOCK WHEEL: ..... 9

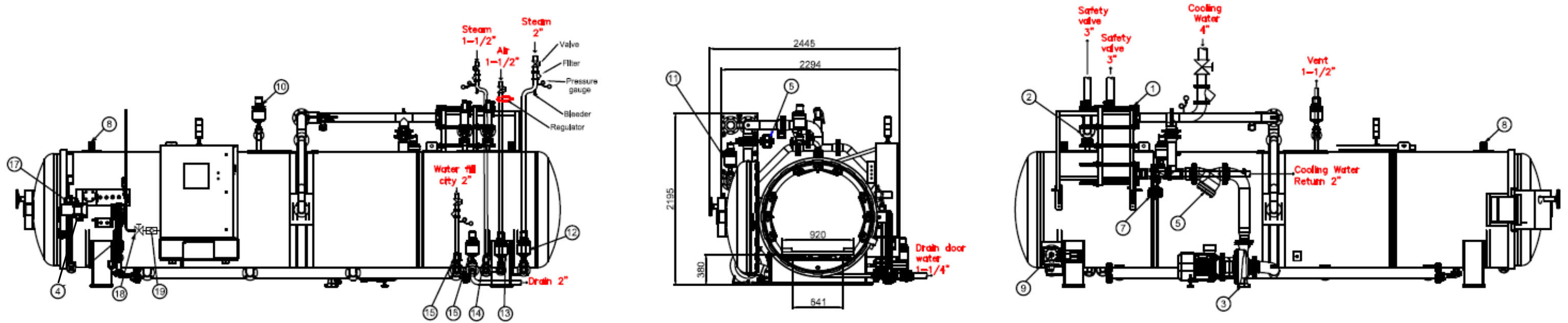
8. SPRAY MAIFOLDS: ..... 10

9. PUMP FILTER AND ROLLER WHEEL: ..... 11

10. INTERNAL CONVEYOR: ..... 12

11. LEVEL INDICATOR:..... 13

1. MAJOR COMPONENTS:



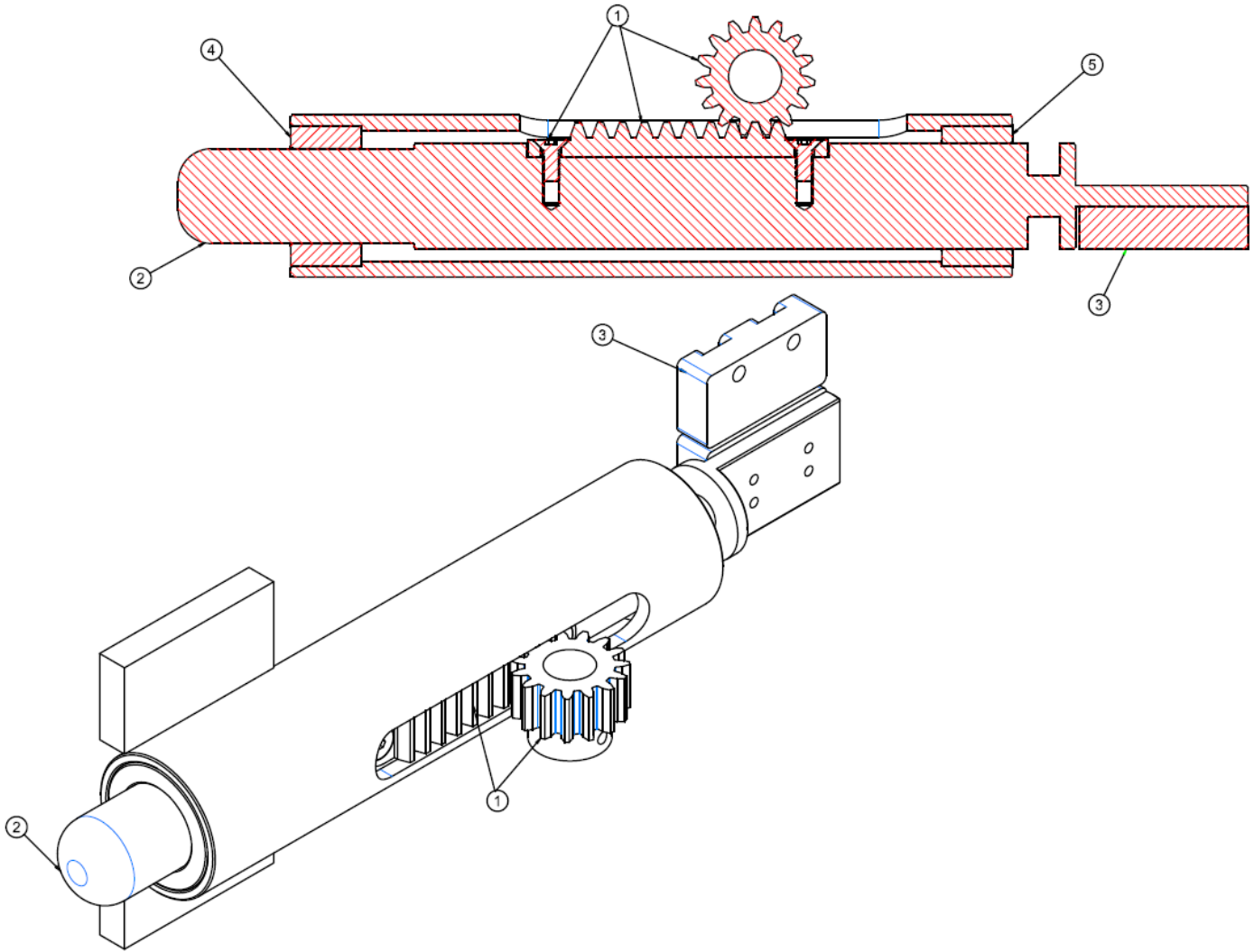
Item Number:	Part Number:	Quantity:	Description:	Item Number:	Part Number:	Quantity:	Description
1	106042	1	Heat Exchanger (53 Plate)	8	119006	2	Vacuum Protection Valve
1	106043	1	Heat Exchanger (75 Plate)	9	119007	1	Internal Conveyor Motor
1	106044	1	Heat Exchanger Gasket (Initial)	10	119008	1	Vent Valve
1	106045	53/73	Heat Exchanger Gasket (Interm)	11	119009	1	Cooling Water Flow Control Valve
1	106046	1	Heat Exchanger Gasket (End)	12	106058	2	Steam Valve
1	106047	1	Heat Exchanger Plate (Initial)	13	119010	1	Process Air Valve
1	106048	53/73	Heat Exchanger Plate (Interm)	14	119011	1	Preheat Steam Valve
1	106049	1	Heat Exchanger Plate (End)	15	119012	1	Process Water Fill Valve
2	106059	2	Safety Relief Valve	16	119013	1	Drain / Water Level Valve
3	106055	1	Water Re-circulation Pump (NM4)	17	119014	1	Drain Door Water Valve
3	106056	1	Water Re-circulation Pump (NMS4)	18	119056	1	Control Air Connection for Instrument Manual Valve (1/2" NPT)
3	106057	2	Pump Seals	19	105097	1	Control Air Connection for Instrument Check Valve (1/2" NPT)
4	106053	1	Security Pin Detector				
5	119003	1	"Y" Filter DN125				
5	119022	1	"Y" Filter DN100				
6	119004	1	Bypass Heat Exchanger				
7	119005	1	Heat Exchanger Valve				

## 2. CONTROLS:

Item Number:	Part Number:	Quantity:	Description:
1	100235	1	Safety Relay*
2	101623	1	PLC Input Module
3	101624	1	PLC Output Module
4	101626	1	PLC Analog Output Module
5	105098	1	PLC Analog Output Module
6	101625	1	PLC Analog Input Module
7	100294	1	Temperature Transmitter
8	100163	1	Pressure Transmitter
9	119030	1	Door Closed Sensor
10	119031	1	Door Locked Sensor
11	119035	1	Check valves DN50
12	119034	1	Check valves DN40
13	119032	1	3 Port Solenoid Valve
14	105015	1	Solenoid Valve
15	119033	1	Positioner
16	106060	1	Differential Safety Pressure Switch
17	106065	1	Pressure Transducer & Manifold
18	119002	1	Water Level Standpipe

\*Not all Customers have this part (i.e. Customer C002690)

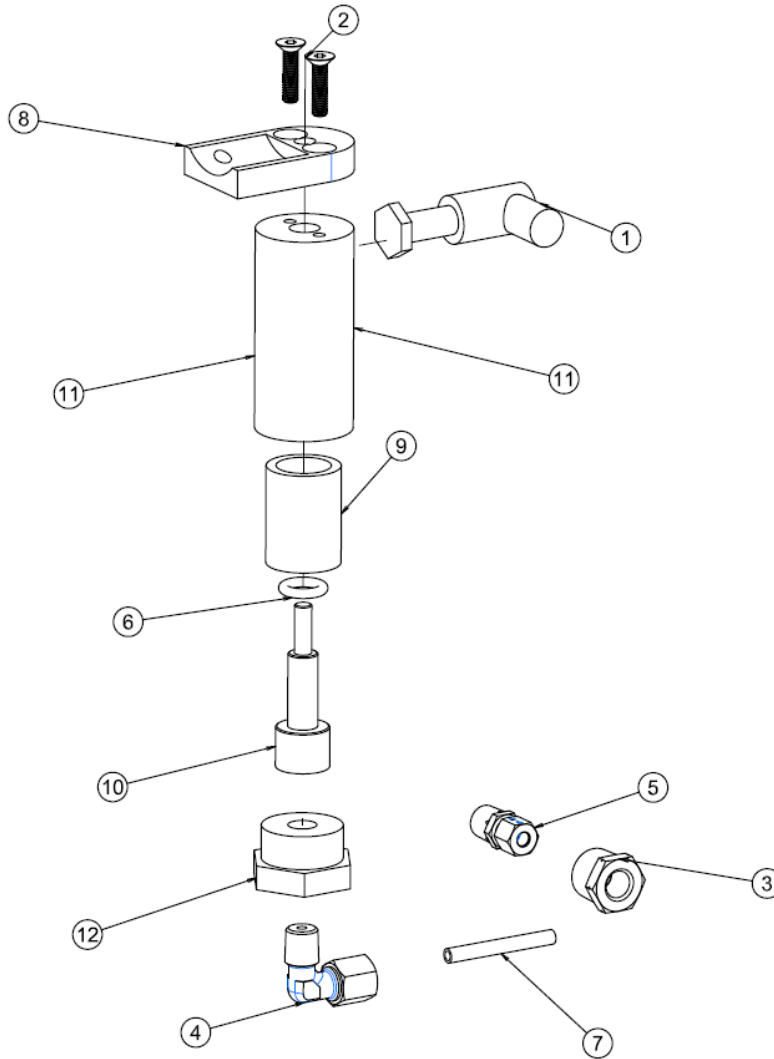
**3. DOOR LOCK SAFETY DEVICE:**



5

Item Number:	Part Number:	Quantity:	Description:
-	106050	1	Complete Door Lock Safety Device
1	-	1	Sprocket Door Latch
1	-	2	Screw
2	-	1	Shaft direct door latch
3	-	1	Safety Latch Detector
4	-	1	Bushing - Direct Latch
5	-	1	Bushing - Direct Latch

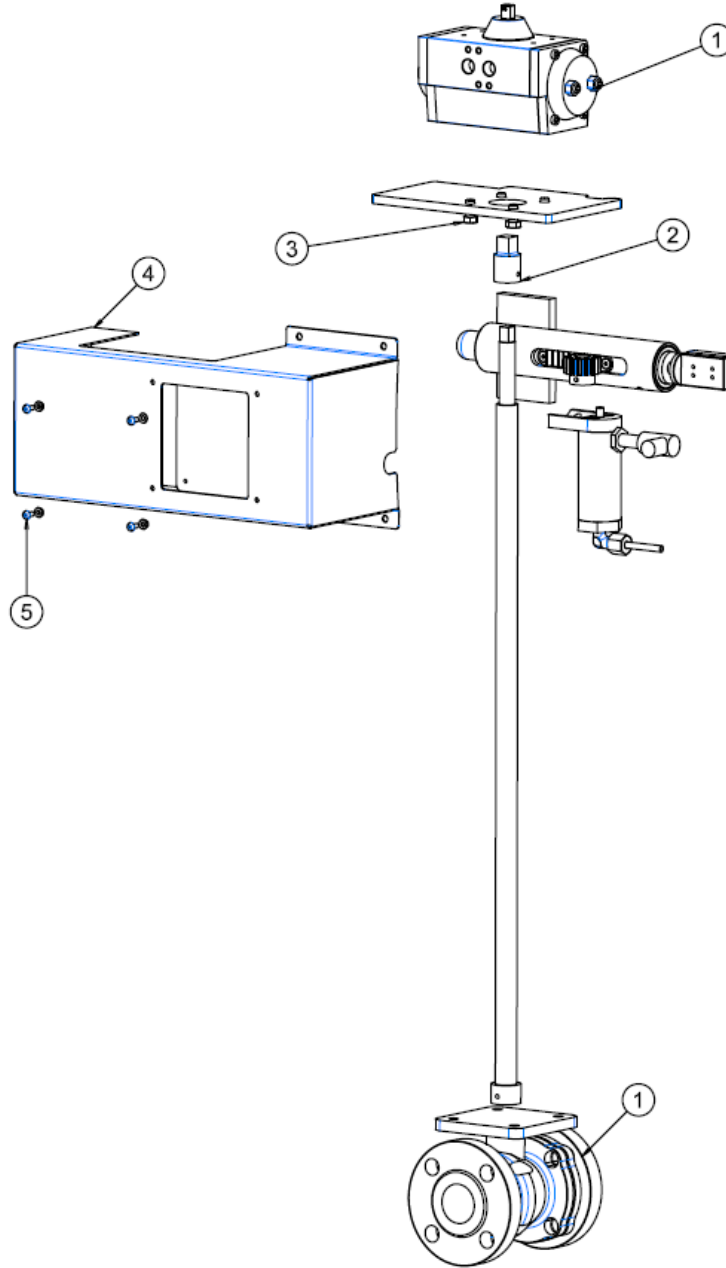
**4. SECURITY PIN CYLINDER:**



6

Item Number:	Part Number:	Quantity:	Description:
1	106053	1	Inductive Detector
2	106074	1	Screw
3	106075	1	Male Reducer
4	106076	1	Fitting
5	-	1	Fitting
6	106077	1	Gasket
7	106078	1	Tube
8	-	1	Base Pin Cylinder Safety Latch
9	-	1	Bushing Pin
10	-	1	Cylinder Pin
11	-	2	Bushing Pin
12	106079	1	Cap

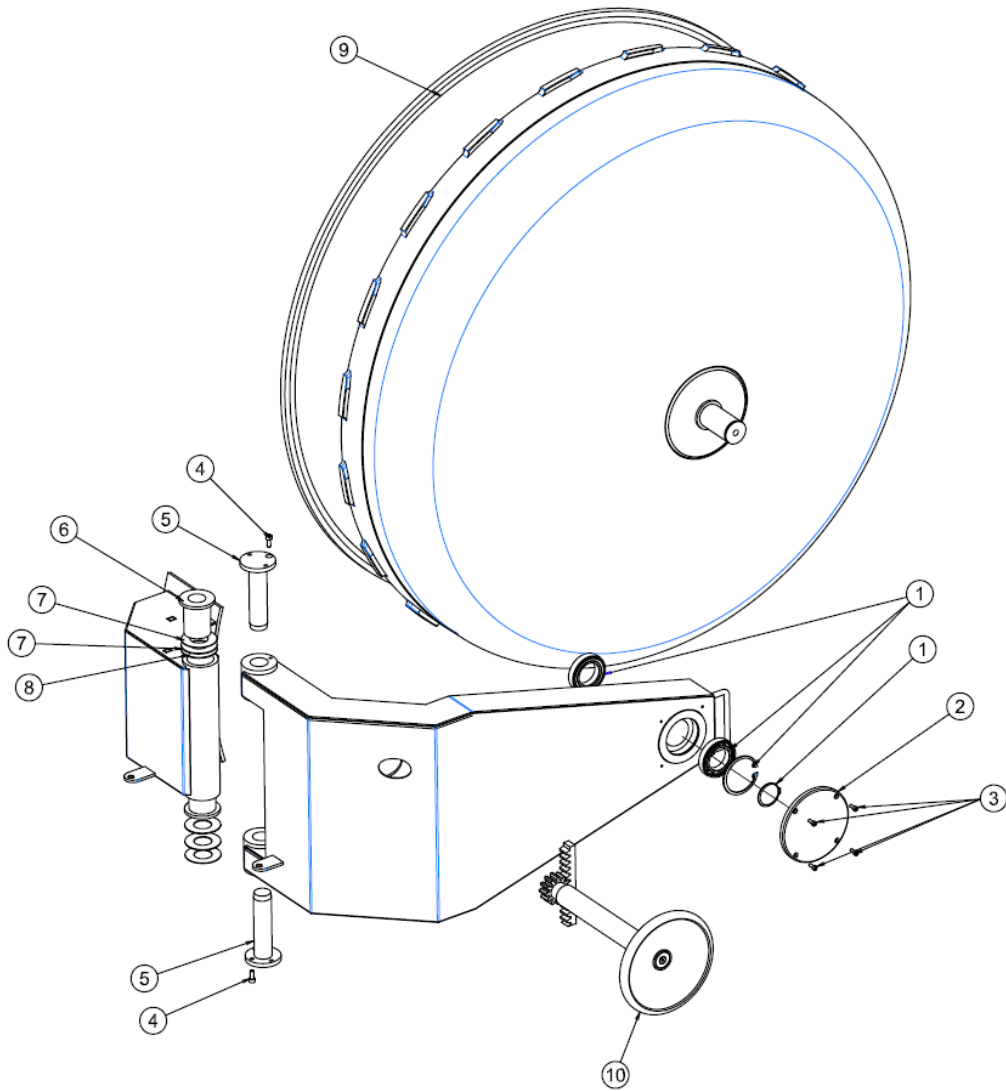
**5. SECURITY CYLINDER:**



7

Item Number:	Part Number:	Quantity:	Description:
1	106080	1	Ball valve with pneumatic actuator
2	-	1	Drain
3	106081	4	Screw
4	106082	1	Cover safety cylinder
5	106083	4	Screw

**6. DOOR:**

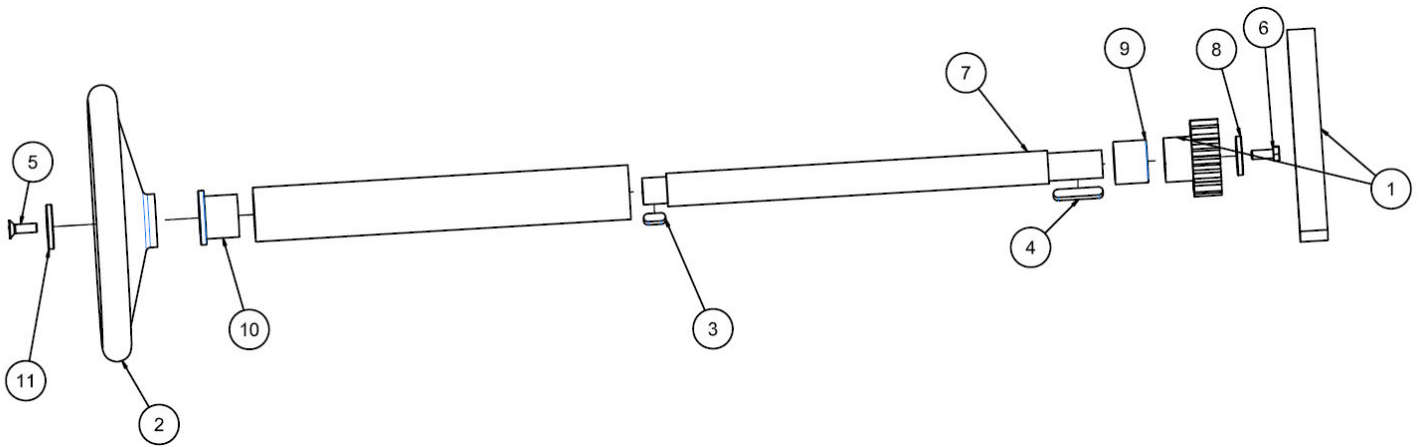


8

Item Number:	Part Number:	Quantity:	Description:
1	106084	2	Door Hinge Bearing Kit
2	106086	1	Hinged Piston
3	106087	4	Screw
4	106088	2	Screw
5	-	2	Short Arm Pin
6	-	2	Bushing
7	106089	4	Washer
8	106090	2	Washer
9	106054	1	Door Gasket with Lubricant
10	-	1	Door Lock Wheel



**7. DOOR LOCK WHEEL:**

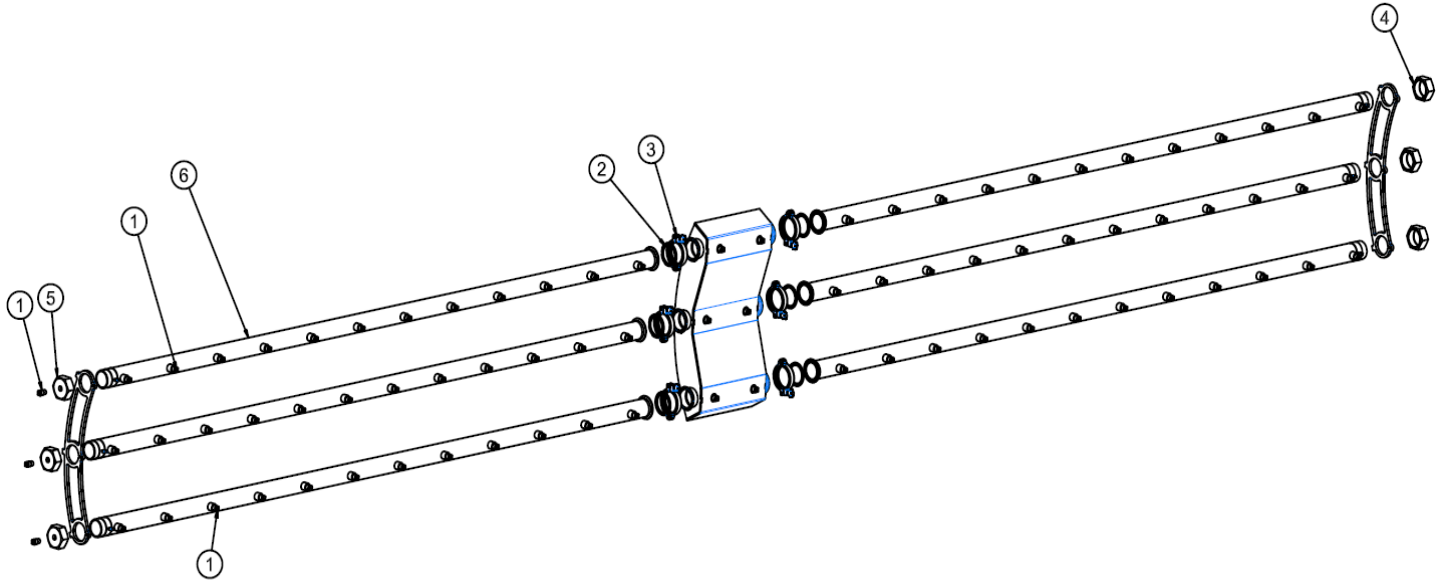


9

Item Number:	Part Number:	Quantity:	Description:
1	-	1	Sprocket
1	-	1	Manual Door Rack
2	106097	1	Door Steering Wheel
3	-	1	Cotter Pin
4	106098	1	Cotter Pin
5	106099	1	Screw
6	119000	1	Screw
7	-	1	Steering Wheel Shaft
8	-	1	Washer
9	-	1	Bushing
10	-	1	Bushing
11	-	1	Steering Wheel Washer



**8. SPRAY MAIFOLDS:**



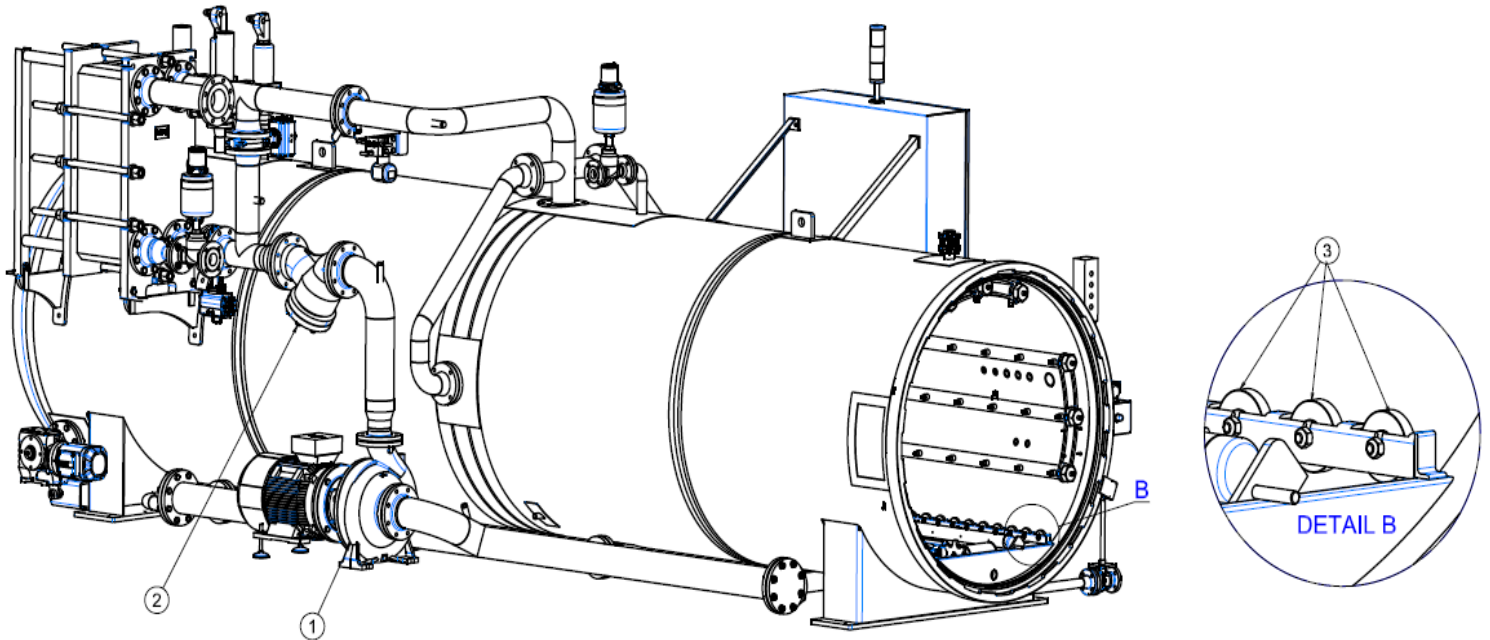
10

Note: There is a total of (3) sets of spray manifolds per retort. Each manifold consists of the following parts and quantities.

Item Number:	Part Number:	Quantity:	Description:
1	119015	75	Nozzle
2	119016	6	Quick link joint
3	119017	6	Joint clamp
4	-	3	End Cap
5	-	3	Cap with hole for Nozzle
6	119018	6	Pipeline for Showers



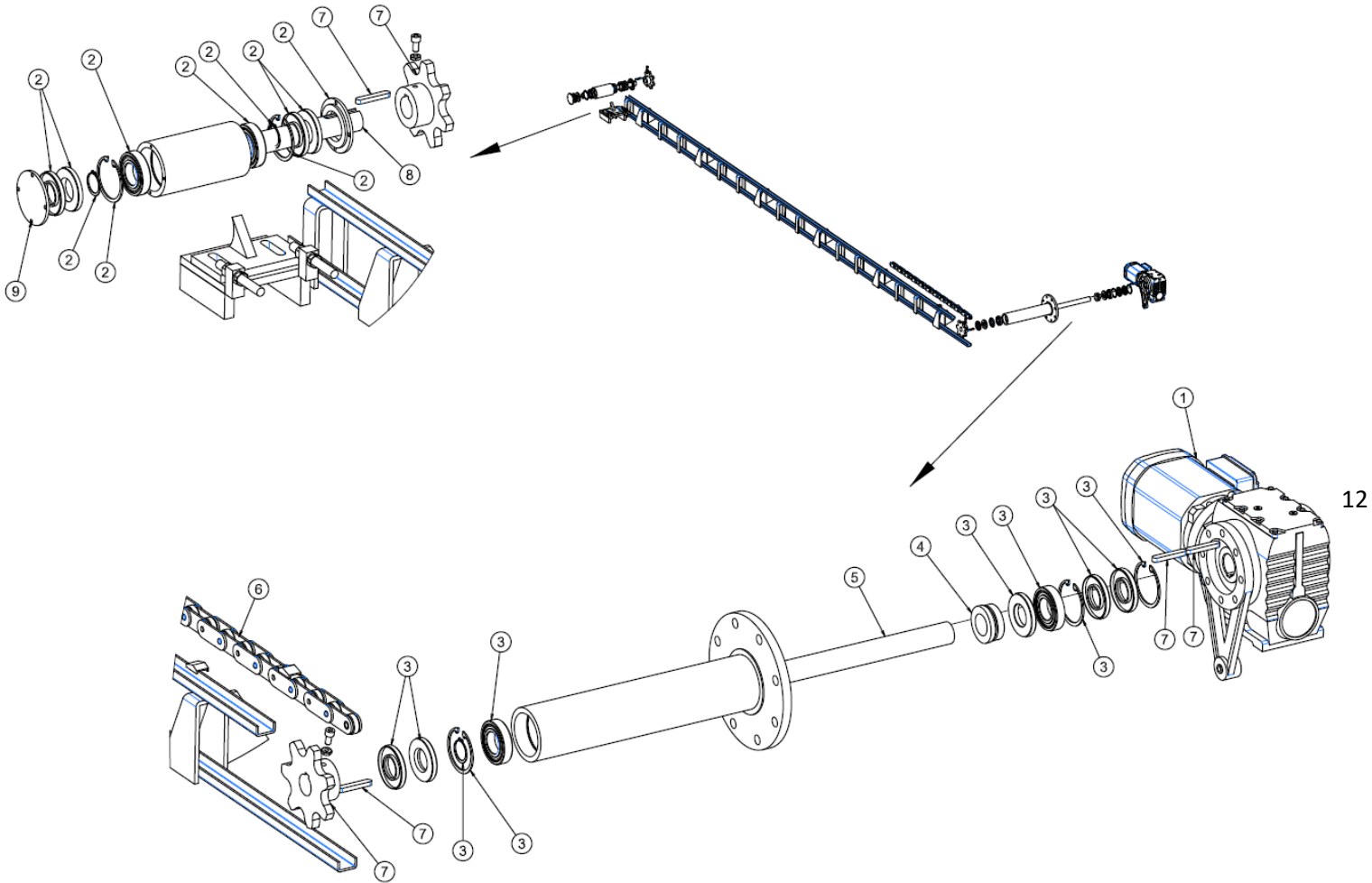
**9. PUMP FILTER AND ROLLER WHEEL:**



Item Number:	Part Number:	Quantity:	Description:
1	106056	1	Calpeda pump NMS4
1	106055	1	Calpeda pump NM4
2	119003	1	"Y" Filter DN125
2	119022	1	"Y" Filter DN100
3	-	79	Roller wheel for 4 position retort
3	-	119	Roller wheel for 6 position retort



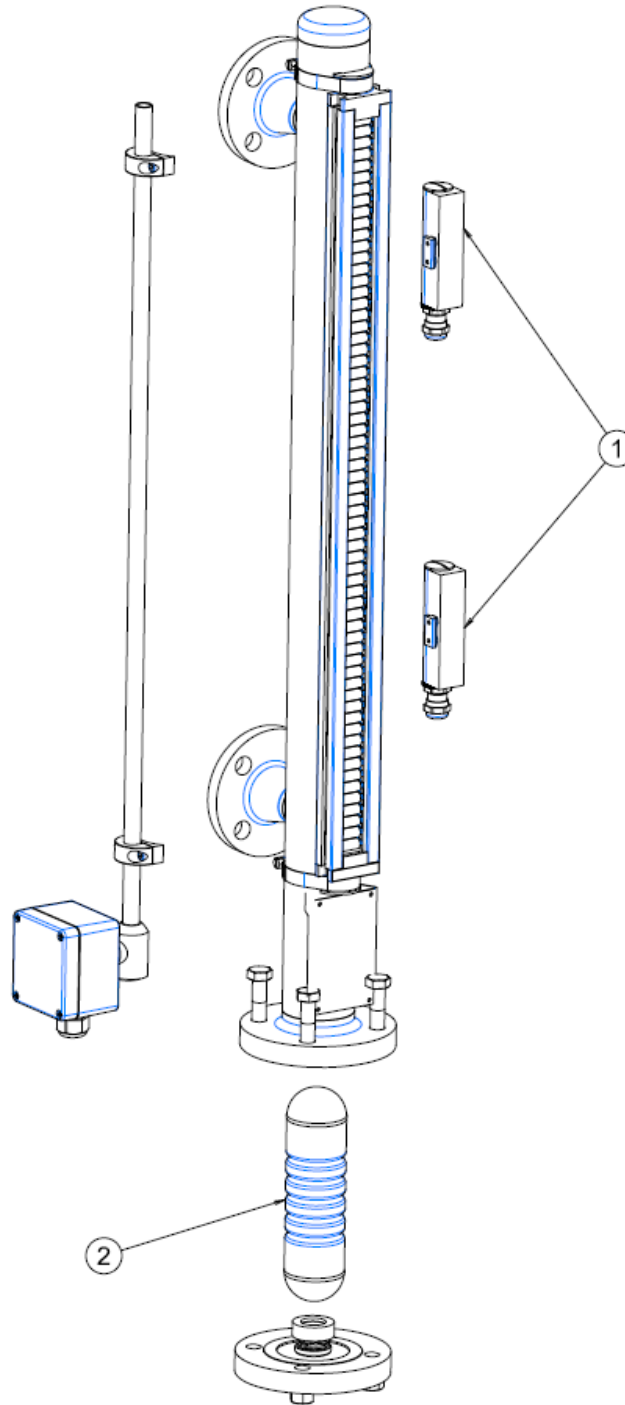
**10. INTERNAL CONVEYOR:**



Item Number:	Part Number:	Quantity:	Description:
1	119007	1	Motor with Shaft
2	119049	1	Idler Sprocket Repair Kit
3	119041	1	Conveyor Drive Repair Kit
4	119039	1	Seal Kit
5	119040	1	Shaft
6	119044	-	Chain Link with Latch
7	119046	2	Sprocket Replacement Kit
8	119048	1	Shaft
9	119050	1	Cover for Tightener



**11. LEVEL INDICATOR:**



13

Item Number:	Part Number:	Quantity:	Description:
-	119019	1	Complete Level Indicator
1	106063	2	Level Detector
2	119021	1	Float for magnetic level