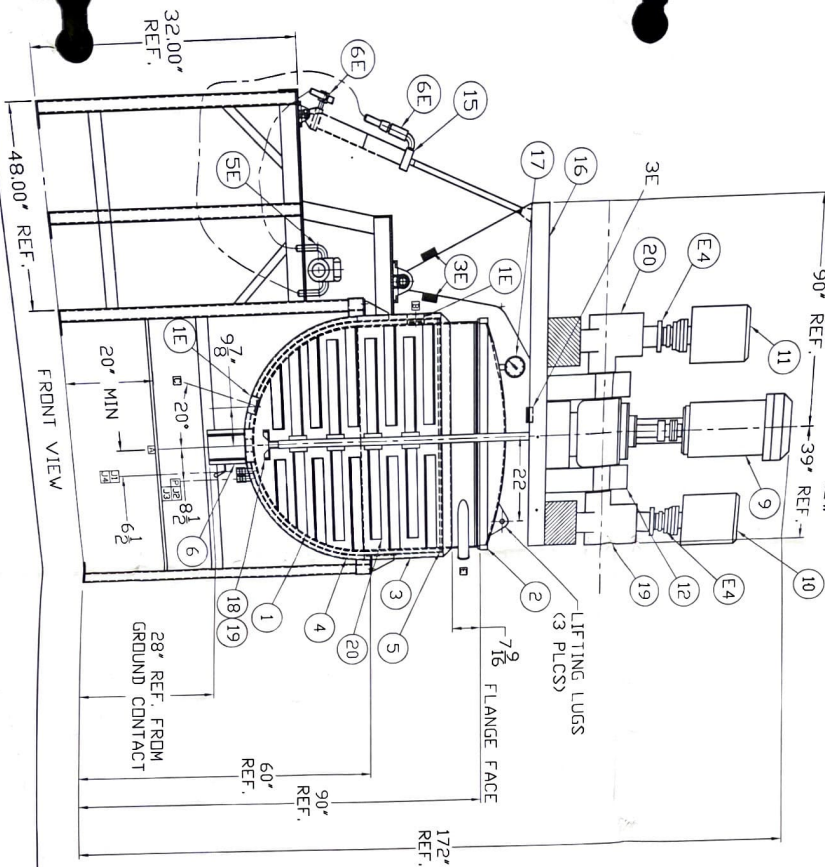
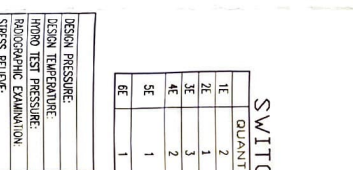
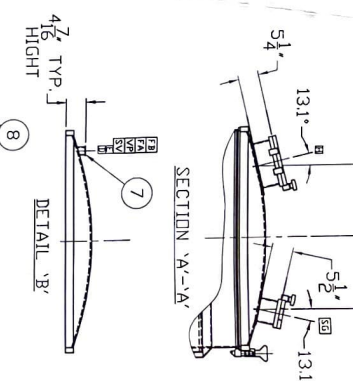
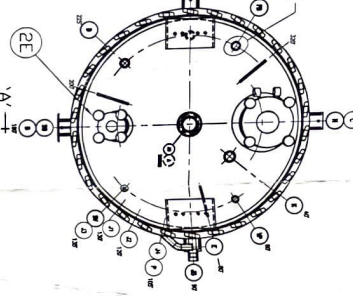
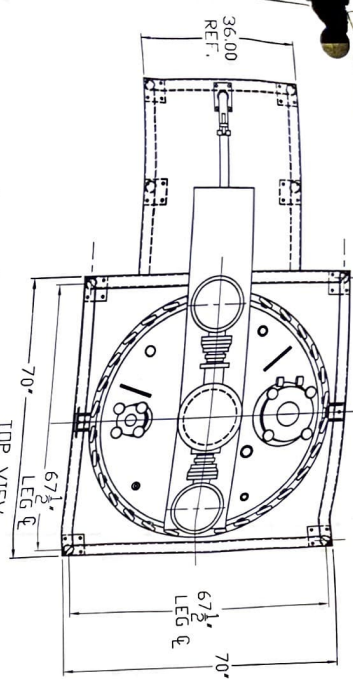


THIS DOCUMENT IS THE PROPERTY OF CHEMREC INCORPORATED
 THE INFORMATION HEREON MAY NOT BE USED NOR REPRODUCED
 WITHOUT THE WRITTEN PERMISSION OF CHEMREC INCORPORATED



- NOTES:
- DESIGNED IN ACCORDANCE WITH ASME SECTION VIII DIVISION 1.
 - 2001 EDITION (2003 ADDENDA), CODE STAMP 'U'.
 - DESIGN PRESSURE: PSIG (GAGE) 40
 - DESIGN TEMPERATURE: MIN. °F (C) 30
 - CORROSION ALLOWANCE: IN. (MM) 0
 - EMPTY WEIGHT: 13,500 LBS.
 - EQUIPMENT HAS 3" OF INSULATION.
 - EXTERIOR SURFACE FINISH 180 GRIT.
 - INTERIOR SURFACE FINISH 180 GRIT.
 - FLANGE BOLT HOLES, UNLESS OTHERWISE NOTED:
 ON SHELL - 10 STAINLESS LONGITUDINAL CENTER LINES
 ON HEAD - 10 STAINLESS LONGITUDINAL CENTER LINES
 - ALL OPENINGS TO BE WEATHER PROTECTED FOR SHIPMENT.
 - VESSEL SHALL BE FREE OF EXCESSIVE WELD SPATTER, MILL SCALE, ETC.
 - ALL FACTORY MADE WROUGHT STEEL BUTT WELDING FITTINGS TO MEET ASME B16.9-1993
 - ALL FORGED FITTINGS, SPECTER FLOWING & HERMOWELL FITTINGS TO MEET ASME B16.5-1996
 - UNLESS OTHERWISE NOTED ALL REPAIRS TO BE MADE AT LEAST 1/8" MIN DIA WEEP HOLE
 - UNLESS OTHERWISE NOTED ALL STAINLESS STEEL VESSELS TO BE PASSIVATED.

MARK	SIZE	SCH	SERVIC	MARK	SIZE	SCH	SERVIC
A	1" VESSEL DIA	10	HERMOWELL	50	1"	10	HERMOWELL
B	1" VESSEL DIA	10	HERMOWELL	50	1"	10	HERMOWELL
C	2" FERTILE	181	NOZZLE	W	1 1/2"	181	NOZZLE
D	1 1/2" FERTILE	181	NOZZLE	W	1 1/2"	181	NOZZLE
E	1 1/2" FERTILE	181	NOZZLE	W	1 1/2"	181	NOZZLE
F	1 1/2" FERTILE	181	NOZZLE	W	1 1/2"	181	NOZZLE
G	1 1/2" FERTILE	181	NOZZLE	W	1 1/2"	181	NOZZLE
H	1 1/2" FERTILE	181	NOZZLE	W	1 1/2"	181	NOZZLE

DESIGN PRESSURE: PSIG (GAGE) 40
 DESIGN TEMPERATURE: MIN. °F (C) 30
 CORROSION ALLOWANCE: IN. (MM) 0
 EMPTY WEIGHT: 13,500 LBS.
 EQUIPMENT HAS 3" OF INSULATION.
 EXTERIOR SURFACE FINISH 180 GRIT.
 INTERIOR SURFACE FINISH 180 GRIT.
 FLANGE BOLT HOLES, UNLESS OTHERWISE NOTED:
 ON SHELL - 10 STAINLESS LONGITUDINAL CENTER LINES
 ON HEAD - 10 STAINLESS LONGITUDINAL CENTER LINES
 ALL OPENINGS TO BE WEATHER PROTECTED FOR SHIPMENT.
 VESSEL SHALL BE FREE OF EXCESSIVE WELD SPATTER, MILL SCALE, ETC.
 ALL FACTORY MADE WROUGHT STEEL BUTT WELDING FITTINGS TO MEET ASME B16.9-1993
 ALL FORGED FITTINGS, SPECTER FLOWING & HERMOWELL FITTINGS TO MEET ASME B16.5-1996
 UNLESS OTHERWISE NOTED ALL REPAIRS TO BE MADE AT LEAST 1/8" MIN DIA WEEP HOLE
 UNLESS OTHERWISE NOTED ALL STAINLESS STEEL VESSELS TO BE PASSIVATED.

REV	DESCRIPTION/CHG#	DATE	APPROVED
A	PER CUSTOMER REQUEST	12/20/08	JMP
B	PER CUSTOMER REQUEST	12/21/08	JMP
C	PER ENG. REQUEST	5/12/08	NB
D	PER ENG. REQUEST	1/6/08	NB

REV	DESCRIPTION/CHG#	DATE	APPROVED
A	PER CUSTOMER REQUEST	12/20/08	JMP
B	PER CUSTOMER REQUEST	12/21/08	JMP
C	PER ENG. REQUEST	5/12/08	NB
D	PER ENG. REQUEST	1/6/08	NB

REV	DESCRIPTION/CHG#	DATE	APPROVED
A	PER CUSTOMER REQUEST	12/20/08	JMP
B	PER CUSTOMER REQUEST	12/21/08	JMP
C	PER ENG. REQUEST	5/12/08	NB
D	PER ENG. REQUEST	1/6/08	NB

GREERCO
 Chemline, Inc.
 A Unit of Robbins & Myers, Inc.

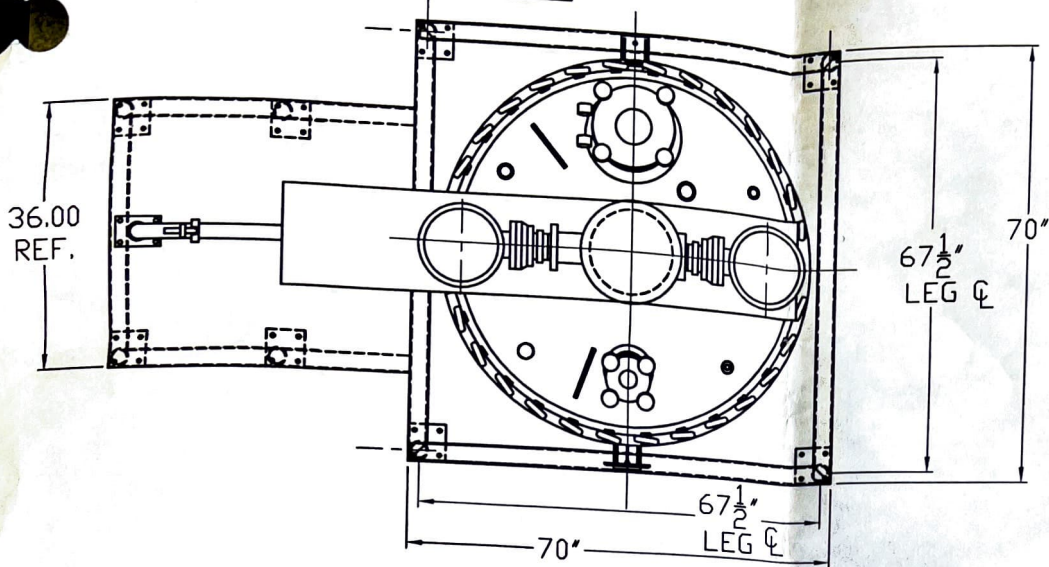
2000 LITER
 AGI MIXER

3-18456-01

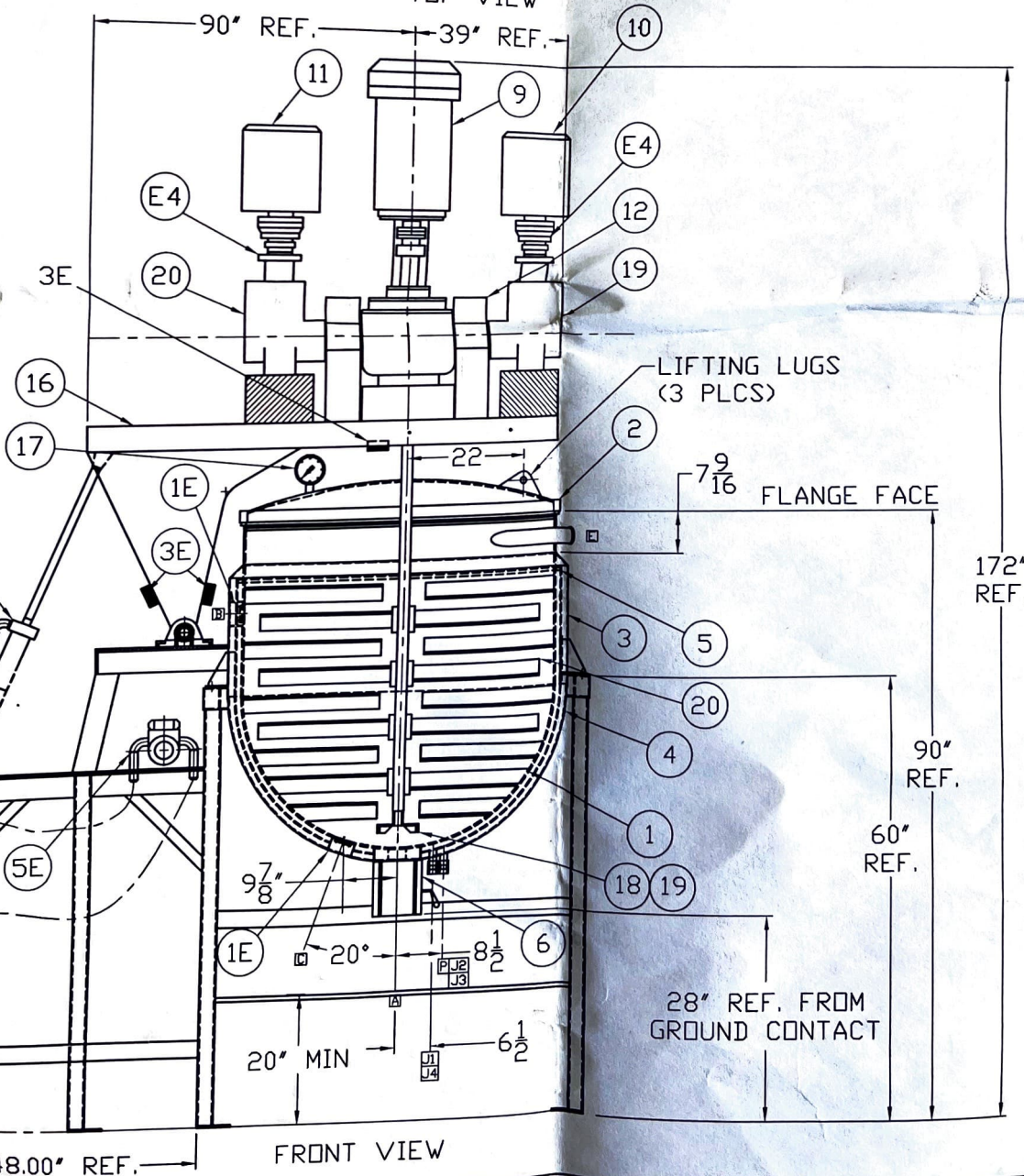
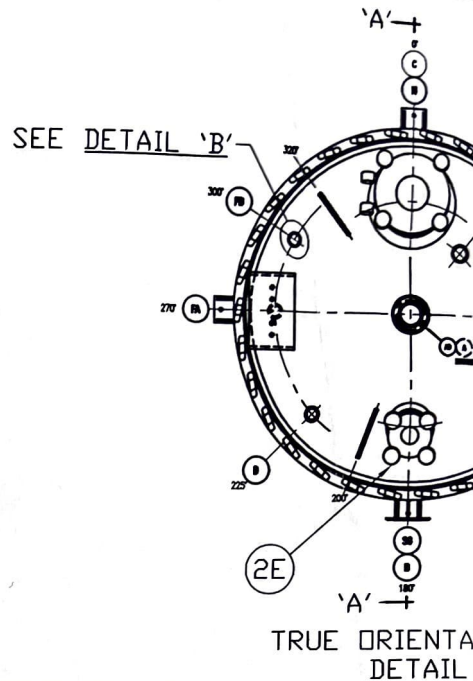
SCALE: NONE

SHEET 1 OF 4

THIS DOCUMENT IS THE PROPERTY OF CHEMINEER INCORPORATED
 THE INFORMATION HEREON MAY NOT BE USED NOR REPRODUCED
 WITHOUT THE WRITTEN PERMISSION OF CHEMINEER INCORPORATED



TOP VIEW



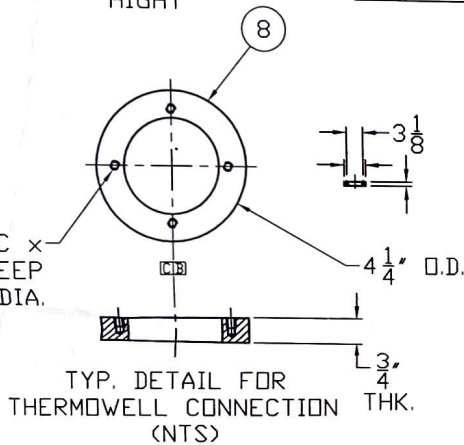
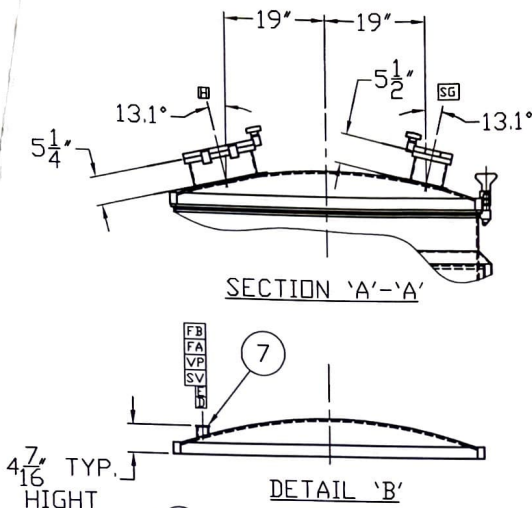
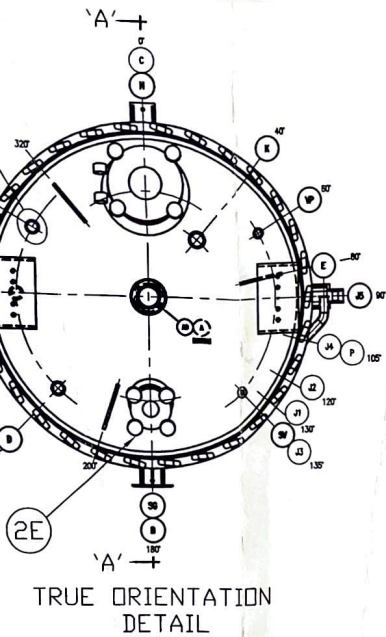
FRONT VIEW

(4) 1
 ON A 3.12" BOLT

NOTES:

- DESIGNED IN ACCORDANCE WITH ASME CODE 2001 EDITION (2003 ADDENDUM)
- DESIGN CONDITIONS:
 DESIGN PRESSURE: P
 DESIGN TEMPERATURE: T
 DESIGN TEMPERATURE CORROSION ALLOWANCE: C
- UNIT CALCULATED WEIGHT EMPTY - 13,500 LBS
- EQUIPMENT HAS 3" DIA. LIFTING LUGS (3 PLCS)
- EXTERIOR SURFACE FINISH: 304 SS
- INTERIOR SURFACE FINISH: 304 SS
- FLANGE BOLT HOLES: 1/2" DIA. ON SHELL - TO STD. 1/2" DIA. ON HEADS - TO STD.
- ALL OPENINGS TO BE WELDED
- VESSEL SHALL BE FINISHED
- UNLESS OTHERWISE NOTED, ALL FACTORY MADE ITEMS SHALL BE ALL PIPE FLANGES SHALL BE ALL FORGED FITTINGS
- UNLESS OTHERWISE NOTED, ALL WELDS SHALL BE
- UNLESS OTHERWISE NOTED, ALL WELDS SHALL BE
- UNLESS OTHERWISE NOTED, ALL WELDS SHALL BE

MARK	SIZE
A	3" FLUSH MOUNT WINDUP SHAF
B	1" VESSEL PAD
C	1" VESSEL PAD
D	2" FERRULE
E	1 1/2" FERRULE
J1-J5	1.5" THD HALF CPL
P	1.5" THD HALF CPL
H	12" SPECIAL



REV.	DESCRIPTION/ECN#	DATE	APPROV
A	PER CUSTOMER REQUEST	02/27/08	JMP
B	PER CUSTOMER REQUEST	03/04/08	JMP
C	PER ENG. REQUEST	5/12/08	NE
D	PER ENG. REQUEST	7/26/08	NE

SWITCHING & SENSORS

	QUANTITY	DESCRIPTION
1E	2	THERMOCOUPLES
2E	1	120VAC FLOOD LIGHT
3E	3	120VAC HD LIMIT SWITCHES
4E	2	5-28V HALL-EFFECT ENCODERS
5E	1	1.5 HP HYDRUALIC POWER SOURCE
6E	1	3 120VAC INPUTS REQUIRED FROM PANEL. HYDRALIC POWER UNIT

DESIGN DATA

	MAIN VESSEL	JACKET/COIL
DESIGN PRESSURE:	15 PSIG / FV	40 PSIG
DESIGN TEMPERATURE:	MIN -20° F MAX 300° F	MIN -20° F MAX 300° F
HYDRO TEST PRESSURE:	20 PSIG	52 PSIG
RADIOGRAPHIC EXAMINATION:	NONE	NONE
STRESS RELIEVE:	NONE	NONE
SPECIFIC GRAVITY OF CONTENTS:	1.0	1.0
JOINT EFFICIENCY:	HEAD(s) 85% / SHELL 70%	HEAD(s) 85% / SHELL 70%
CORROSION ALLOWANCE:	NONE	NONE
POLISHING ALLOWANCE:	0.02"	NONE

VESSEL HYDRO-TEST: 1.3 x 15 PSIG = 20 PSIG
 JACKET HYDRO-TEST: 1.3 x 40 PSIG = 52 PSIG

ITEM	DESCRIPTION	MAT'L	SPEC	QTY
20	GEAR REDUCER	-	-	1
19	GEAR REDUCER	-	-	1
18	PADLES	-	-	2
17	STATOR	-	-	1
16	TURBINE	-	-	1
15	SANITARY PRESSURE GAUGE	-	-	1
14	SUPPORT CHANNEL	304	-	1
13	HYDRALIC CYL.	-	-	1
12	COUPLING GUARD	-	-	2
11	7 1/2HP GEAR MOTOR	-	-	1
10	5HP GEAR MOTOR	-	-	1
9	60HP C FACE MOTOR	-	-	1
8	VESSEL PAD: 4 1/4" O.D. x 3/4" THK.	316	-	2
7	SANITARY PRESSURE GAGE	316	-	6
6	3" FLUSH MOUNT MANUAL SHUT-OFF VALVE	316L	-	1
5	JACKET HEMISPHERICAL HEAD: 59 1/2" I.D. x 3/16" THK.	304/304L	SA-240	1
4	SHEATHING HEMISPHERICAL HEAD: 61 7/8" I.D. x 0.120" THK.	304/304L	SA-240	1
3	SHEATHING SHELL: 62 1/4" I.D. x 0.120" THK.	304/304L	SA-240	1
2	INNER HEMISPHERICAL HEAD: 57" I.D. x 5/16" THK.	316/316L	316/316L	1
1	VESSEL INNER SHELL: 57" I.D. x 5/16" THK.	316/316L	316/316L	1

CUSTOMER: ARCADIA EQUIPMENT INC.
 P.O. NO.: 41176 QTY.: 1



Chemneer, Inc.

A Unit of Robbins & Myers, Inc.

DRAWN	NB	12/2/07
CHECK	JMP	12/2/07
PROJ. ENGR.	MJR	12/2/07
MFG. ENGR.		
APPL. ENGR.		
QUAL. CONT.	W.F.H	12/2/07

2000 LITER
AGI MIXER

SIZE	REV.
B	D

3-18456-01

SCALE: NONE SHEET 1 OF 4

- NOTES:**
- DESIGNED IN ACCORDANCE WITH ASME SECTION-VIII DIVISION 1, 2001 EDITION (2003 ADDENDA), CODE STAMP 'U'.
 - DESIGN CONDITIONS:

	CORE SIDE	JACKET SIDE
DESIGN PRESSURE: PSIG (BAR)	15/FV	40/FV
DESIGN TEMPERATURE MAX.: °F (°C)	300	300
DESIGN TEMPERATURE MIN.: °F (°C)	-20	-20
CORROSION ALLOWANCE: IN. (mm)	0"	0"
 - UNIT CALCULATED WEIGHT, EMPTY - 13,500 LBS
 - EQUIPMENT HAS 3" OF INSULATION.
 - EXTERIOR SURFACE FINISH 180 GRIT.
 - INTERIOR SURFACE FINISH 180 GRIT.
 - FLANGE BOLT HOLES: (UNLESS OTHERWISE NOTED)
 ON SHELL - TO STRADDLE LONGITUDINAL CENTER LINES
 ON HEADS - TO STRADDLE RADIAL CENTER LINES
 - ALL OPENINGS TO BE WEATHER PROTECTED FOR SHIPMENT.
 - VESSEL SHALL BE FREE OF EXCESSIVE WELD SPATTER, MILL SCALE, ETC. UNLESS OTHERWISE NOTED.
 - ALL FACTORY MADE WROUGHT STEEL BUTT WELDING FITTINGS TO MEET ASME B16.9-1993
 ALL PIPE FLANGES & FLANGED FITTINGS TO MEET ASME B16.5-1996
 ALL FORGED FITTINGS, SOCKET WELDING & THREADED FITTINGS TO MEET ASME B16.11-1991.
 - UNLESS OTHERWISE NOTED CIRCULAR AND LONG SEAMS ARE OF TYPE 1.
 - UNLESS OTHERWISE NOTED ALL REPAIRS TO HAVE AT LEAST (1) 1/8" MIN DIA. WEEP HOLE
 - UNLESS OTHERWISE NOTED ALL STAINLESS STEEL VESSELS TO BE PASSIVATED.

MARK	SIZE	SCH.	SERVICE	MARK	SIZE	SCH.	SERVICE
A	3" FLUSH MOUNT MANUAL SHUT-OFF VALVE	--	OUTLET	SG	6" SPECIAL	--	SIGHT GLASS W/ LIGHT ASSEMBLY
B	1" VESSEL PAD	--	THERMOWELL	SV	1" FERRULE	.145"	SAFETY VALVE
C	1" VESSEL PAD	--	THERMOWELL	VP	1 1/2" FERRULE	.153"	INSTRUMENT
D	2" FERRULE	.161"	NOZZLE	FA	2" FERRULE	.161"	FUTURE CONN
E	1 1/2" FERRULE	.153"	NOZZLE TANGENTIAL	FB	2" FERRULE	.161"	FUTURE CONN
J1-J5	1.5" THD HALF CPLG	3000#	JACKET CONN	K	2 1/2" FERRULE	.203"	NOZZLE
P	1.5" THD HALF CPLG	3000#	JACKET PRESSURE RELIEF	AG	6" WELD END SPECIAL	40S	MIXER
H	12" SPECIAL	--	HANDLE WITH HAND WIPER				